

# THINKING ABOUT GRADUATE SCHOOL?

Prep Class  
For  
The GRE?

**FREE GRE  
Prep Site**

[www.number2.com](http://www.number2.com)



**University of Minnesota  
Test Prep Resource Center  
SMART Learning Commons  
(204 Walter Library)  
(612) 624-1584  
[smartlc@umn.edu](mailto:smartlc@umn.edu)  
**University Students:  
Free!****

<http://www.cce.umn.edu/testprep>

## Community Service-Learning

(for all students)  
240 Appleby Hall

- \* Volunteer in the Twin Cities Area
- \* Community Engagement Scholars Program (CESP)
- \* Info Sessions about these programs
- \* Service-Learning Courses

[csl@umn.edu](mailto:csl@umn.edu)  
612-626-2044  
[servicelearning.umn.edu](http://servicelearning.umn.edu)

## CLA Career Services

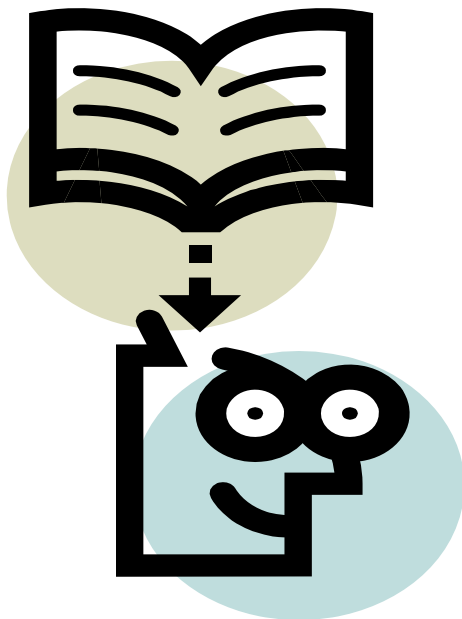
(for CLA students)  
411 Science Teaching & Student Services

- \* Internships Guide
- \* Resume Writing
- \* Job Search & Interviewing Guides
- \* Interview on-campus for Jobs/Internships
- \* Graduate School Info and Advising

[clacareer@umn.edu](mailto:clacareer@umn.edu)  
612-624-7577  
[clacareer.umn.edu](http://clacareer.umn.edu)

## Getting good letters of recommendation:

<http://www.psychwww.com/careers/lettrec.htm>



## American Sociological Association's Advice for Getting into to Grad School

[http://www.asanet.org/employment/careers21st\\_graduateschool.cfm](http://www.asanet.org/employment/careers21st_graduateschool.cfm)

## Putting Together Your Grad School Application

<http://www.csulb.edu/colleges/cla/departments/sociology/programs/GradSchoolPlanning.html>

# THINKING ABOUT GRADUATE SCHOOL?

## Graduate School in Social Work

## Resource Site:



### TIPS:

- The average applicant has taken two years to enhance their application with further coursework, research experience, or field experience.
- Jumping into a graduate program without carefully considering all of the options may leave you highly in debt and frustrated with your coursework, your advisor, or your degree.
- Be sure the work that you pursue will hold your interest and passion long enough to pay off your loans!

<http://www.socialworkers.org/swportal/ssw1>

### Researching Subject Areas

- Know Your Interests
- Gain perspective on the varied options
- Take the time to consider options
- Gain experience within the area first
- Consider your potential clients:
  - ◊What experiences might they come with?
  - ◊What population do they come from?
  - ◊What kind of resistance might they bring?

### Choosing the Right Program

- Are the courses interesting?
- Is there a good faculty match for an advisor?
- Is the program accredited by the right entity?
- Is the program theoretical or application based?
- Who is ranking the program and how is it ranked?

### Graduate School Rankings in Sociology:

<http://graduate-school.phds.org/rankings/sociology>

## Considering Graduate School in Sociology

<http://www.grinnell.edu/academic/sociology/lifeaftergrinnell/socgradschool>

<http://sociology.nd.edu/undergraduate-program/graduate-school-planning/>

<http://www.sociology.emory.edu/downloads/AGuideforEmorySociologyMajorstoGraduateStudy.pdf>

